

iUSBport CAMERA² User Manual

FCC STATEMENT

1. This device complies with Part 15 of the FCC Rules. Operation is subject to the following two conditions:

(1) This device may not cause harmful interference.

(2) This device must accept any interference received, including interference that may cause undesirable operation.

2. Changes or modifications not expressly approved by the party responsible for compliance could void the user's authority to operate the equipment.

NOTE: This equipment has been tested and found to comply with the limits for a Class B digital device, pursuant to Part 15 of the FCC Rules. These limits are designed to provide reasonable protection against harmful interference in a residential installation. This equipment generates, uses and can radiate radio frequency energy and, if not installed and used in accordance with these instructions, may cause harmful interference to radio communications. However, there is no guarantee that interference will not occur in a particular installation. If this equipment does cause harmful interference to radio or television reception, which can be determined by turning the equipment off and on, the user is encouraged to try to correct the interference by one or more of the following measures:

- Reorientate or relocate the receiving antenna.

- Increase the separation between the equipment and receiver.

- Connect the equipment into an outlet on a circuit different from that to which the receiver is connected.

- Consult the dealer or an experienced radio/TV technician for help.

RF warning statement:

The device has been evaluated to meet general RF exposure requirement. The device can be used in portable exposure condition without restriction.

Sanho Manufacturer's Limited Warranty

Sanho warrants to the end user, that this product, excluding content and or software supplied with or on the product, will be free from material defects in manufacture, will conform to Sanho's published product specifications and be fit for normal use during the Warranty Period specified below commencing on the date of purchase provided that the product is legally placed on the market.

To make a warranty claim please contact Sanho at the telephone number below or support@hypershops.com within the Warranty Period and provide proof of purchase (showing date and place of purchase and name of the reseller) and product name, type and number. You may return the product after first obtaining a Return Material Authorization number and following any other guidelines listed. For further information see www.hypershops.com. Sanho may at its option repair this product or provide you with an equivalent product; and if unable to repair or replace the product, will refund the purchase price. Sanho will not be liable for indirect or consequential damage (including loss of data), or for damage caused by improper use (including use in an incompatible device and use not in accordance with the instructions), or by improper installation, unprofessional repair, modification or accident. This constitutes Sanho's entire liability which will never exceed the price you paid for it, plus the necessary costs you made for the warranty claim. Sanho products must not be used in applications where failure could threaten injury or life, such as life support systems. National, state and local laws may grant you other rights that are not affected by this warranty.

Warranty Period: 1 Year

Sanho Corporation
47456 Fremont Blvd.
Fremont, CA 94538, U.S.A.
Tel: +1-408-737-7878

Additional terms and conditions can be found at www.hypershops.com
Usage of this product constitute acceptance of these terms and conditions.

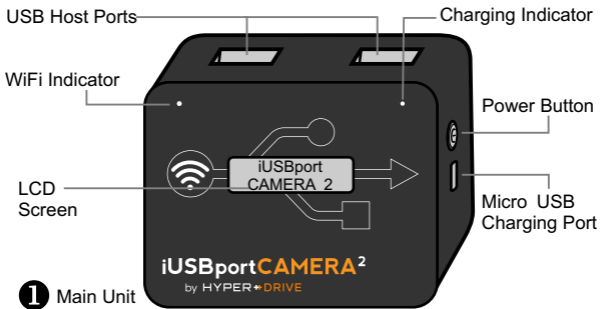
Content

- What's In The Box
- Battery Charging
- Using iUSBport As USB Charger
- Network Settings
- Connecting To iUSBport
- Connecting To DSLR
- Camera Control Overview
- Camera Control Settings
- Function Dashboard
- Remote Capture Image
- Live View & Focus Selection
- Video Record Mode
- Client Mode
- Full Screen Mode
- TV-Out (AirPlay & HDMI)
- Copy memory card to USB HDD
- Standard Network Service List
- Accessing iUSBport in Mac OS
- Accessing iUSBport in Windows
- Upgrading the Firmware
- Specifications

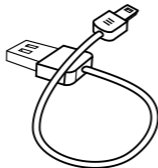


The contents described in this manual is based on the iOS app iUSBcam V1.2 and device Firmware V41. As software continues to improve, the manual contents are subjected to change without notice.

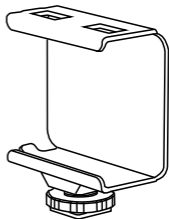
What's In The Box



2 User Manual



3 Micro USB Charging Cable



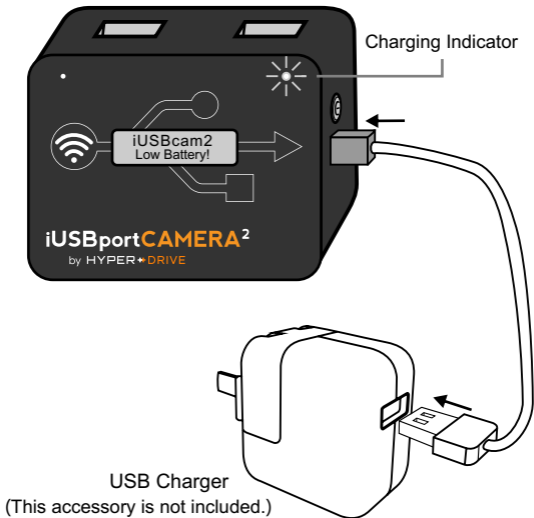
4 Camera Mount

Battery Charging

A USB charger is not included. It is recommend to use a high power 10W(5V/2.1A) and above USB charger(that comes with iPads or tablets) to charge the battery.

When the LCD displays 'Low Battery', you should charge the iUSBport . **After displaying 'Low Battery' for 3 minutes, iUSBport will turn off automatically.**

The charging indicator will light up orange while charging and green when fully charged(~7hours to full charge from empty)



Using iUSBport As USB Charger

iUSBport CAMERA is able to function as a USB charger for a wide range of mobile devices. It outputs 5V, 1A from each of its two USB ports, allowing it to charge up to two USB devices like smartphones at the same time.

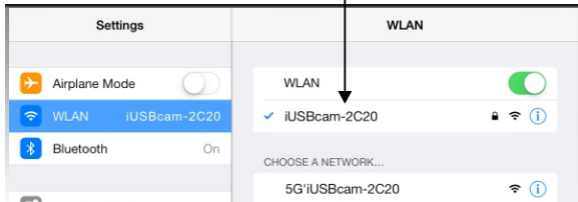


Connecting To iUSBport CAMERA

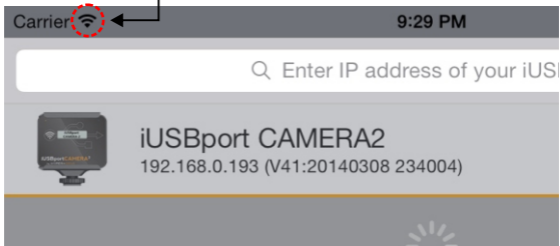
- 1 Install 'iUSBcam' App on the mobile device (e.g. iPad) →



- 2 Go to "Settings" on your mobile device (e.g. iPad) →
Select "iUSBcam..." from the list of Wi-Fi networks.



- 3 Wait for Wi-Fi symbol to appear to indicate successful connection with Wi-Fi network.



iOS 7.x.x will always try to connect to Apple's iCloud server when connecting to WiFi. It may take up to 15 seconds before the Wi-Fi network is ready.

Network Settings

Tap 'iUSBport Camera2'



icon to show network settings menu (iOS App).

Network Settings

SSID: — SSID: Up to 32 characters

Password: — Password: 8 to 40 characters

2.4G Channel: **Select** — Select available channel

5G Channel: **Select** — For optional 5G adapter only

2.4G Coexist with 5G:

Hide SSID: — Do not broadcast SSID

Hide Password: — Do not display password on LCD

Enable Client Mode: — Allow to join existing WLAN

Join ... **Apply** **Cancel**

Save changes

Scan and show WLAN list

If a camera was connected to iUSBport CAMERA, 'Network Settings' menu will NOT be shown.

Connecting To DSLR


- 1 Connect DSLR to iUSBport with the standard USB cable provided by your camera.

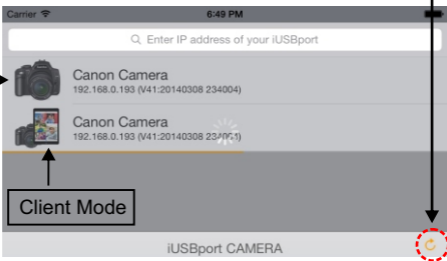


- 4 Wait for iUSBport to detect your DSLR camera. The LCD screen will display the following message:

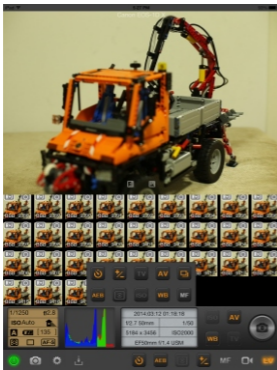
iUSBcam
Camera Ready

Camera Control Overview

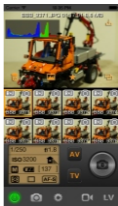
- 1 Install and open 'iUSBcam' App on the mobile device (e.g. iPad)
- 2 Tap  icon to search for iUSBport CAMERA.



- 3 Select your DSLR camera to enter 'Master Mode'. The 'Camera Control' panel will fit to your mobile device's screen.



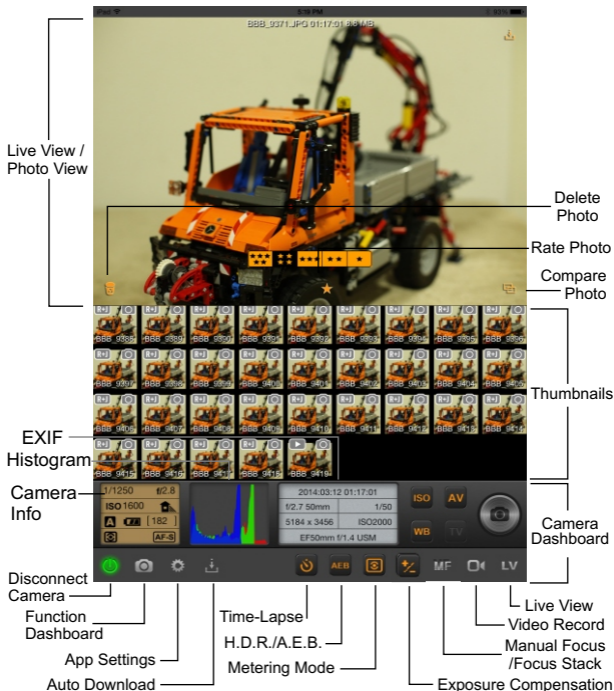
Camera Control Panel For iPad




Camera Control Panel For iPhone

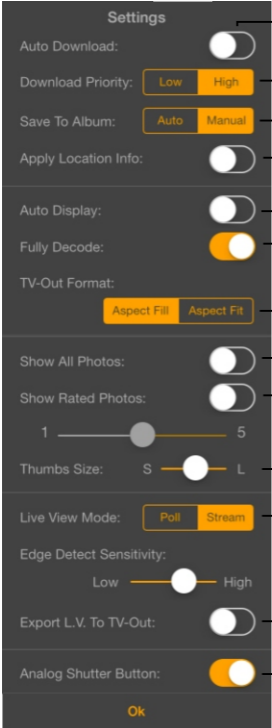
Camera Control Overview

Some functions or buttons may be disabled in certain camera models.



Camera Control Settings

Tap 'App Settings'  button to show settings menu (iOS App).



The screenshot shows the 'Settings' menu for the camera app. The settings are as follows:


- Auto Download:** A toggle switch that is currently turned off.
- Download Priority:** Two buttons, 'Low' and 'High', with 'High' selected.
- Save To Album:** Two buttons, 'Auto' and 'Manual', with 'Manual' selected.
- Apply Location Info:** A toggle switch that is currently turned off.
- Auto Display:** A toggle switch that is currently turned off.
- Fully Decode:** A toggle switch that is currently turned on.
- TV-Out Format:** Two buttons, 'Aspect Fill' and 'Aspect Fit', with 'Aspect Fill' selected.
- Show All Photos:** A toggle switch that is currently turned off.
- Show Rated Photos:** A toggle switch that is currently turned off.
- Rating:** A slider control ranging from 1 to 5, with the slider positioned at 3.
- Thumbs Size:** A slider control with 'S' and 'L' markers, with the slider positioned in the middle.
- Live View Mode:** Two buttons, 'Poll' and 'Stream', with 'Poll' selected.
- Edge Detect Sensitivity:** A slider control ranging from 'Low' to 'High', with the slider positioned in the middle.
- Export L.V. To TV-Out:** A toggle switch that is currently turned off.
- Analog Shutter Button:** A toggle switch that is currently turned on.

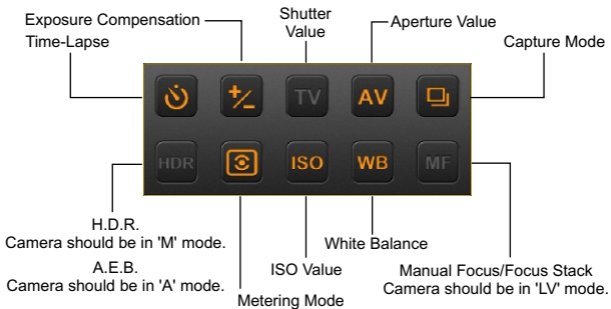
Annotations on the right side of the screenshot provide additional information:

- Download captured image automatically
- Select download priority
- If 'Manual' is enabled, selected image will reside in memory instead of flash. In this case, 'Compare' function may be unusable.
- Append location info to downloaded image
- Display captured image automatically
- Decode full image (For retina devices only)
- The scaling method that the App displays a 3:2 image on a 16:9 HDTV
- Displays all photos stored in the camera's memory card. 'Auto Download' will be disabled.
- Show only rated photos. Show photos that are greater or equal to the selected rating.
- Select the thumbnail size
- Stream: Provides smoother live view but requires a strong network connection.
- Poll: Lower quality streaming suitable for poor or contested network connection.
- Output simultaneous Live View to HDTV (AirPlay or HDMI) instead of still image
- Simulate the real shutter button
- Enable this option to support continuous capture or 'Bulb' mode. (For Canon camera only)


At the bottom of the settings menu, there is an 'Ok' button.

Function Dashboard

Tap  button to show the 'Function Dashboard' .



Remote Capture Image

Tap  icon to remotely release shutter.

Depending on the camera's setting, it may perform AF drive before releasing shutter. If it fails to complete AF, shutter will not be released. In this case, please adjust your camera or lens. The camera will always store pictures in the memory card. If there is no memory card in the camera, the shutter will not be released.

If 'Auto Download' option is enabled, the captured image will automatically transfer to the mobile device system album. If 'Save to album' is enabled, when user taps a thumbnail, it will be transferred to the system album.

Be sure your mobile device has enough space.

Live View & Focus Selection

- 1 Tap **LV** icon to enter 'Live View' mode.

Not all DSLR support this function. Please check compatible camera list at www.iusbcam.com

- 2 Tap anywhere on the live view image to instruct camera to focus on that point. A focus indicator will display for a few seconds. A green focus indicator shows that focus is successful.




If the shutter is triggered during AF driving, camera will stop AF driving and capture image immediately. As a result, the image taken may be out of focus.

By default, for most cameras the exposure metering point is not the same as the AF point. Please refer to your camera user manual for more information.


- 3 Tap **LV** icon again to exit from 'Live View' mode.

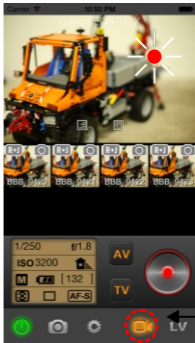
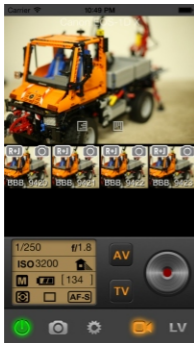
Video Record Mode

- 1 Tap  icon to enter 'Video Record' mode.


Not all DSLR support this function. Please check compatible camera list at www.iusbcam.com

- 2 Tap anywhere within live view area to focus on that point.

- 3 Tap  icon to start video recording. A red dot will blink at the top right corner of the live view area to indicate that video recording is in progress..



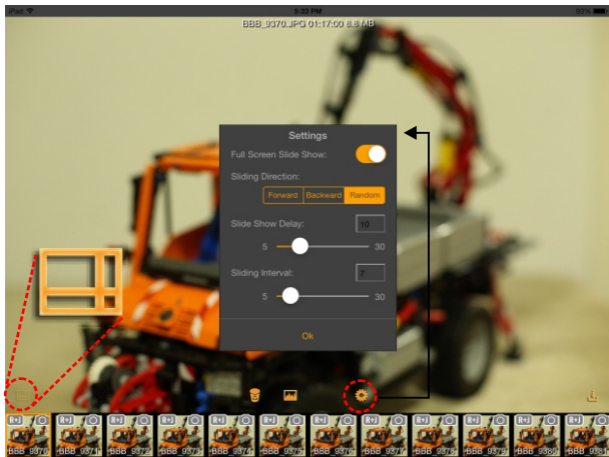
Please pay attention to the video recording operation. If the mobile device (e.g. iPad) goes to sleep, the camera will stop recording the video.


- 4 Tap  icon again to stop video recording.



Full Screen Mode

Full screen mode is available in landscape layout only. In Client mode, 'Slide Show' function can be enabled to play captured photos automatically.



Tap 'Layout'  button to switch screen layout between full screen layout and browser layout.



TV-Out (AirPlay & HDMI)

Master Mode TV-Out

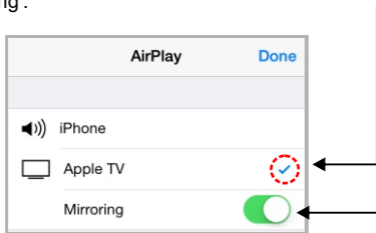
The iUSBcam App outputs selected image to TV-Out by default. Even if Live View is displaying on the iOS device, the selected image can be displayed on the external screen.

Client Mode TV-Out

The iUSBcam App outputs selected image to TV-Out by default. If Full Screen mode was enabled, iUSBcam app will output slide show pictures to TVOut .

To enable AirPlay, Apple TV will have to join iUSBport CAMERA's WLAN.

In iOS device, open 'AirPlay' menu, select 'Apple TV' and enable 'Mirroring'.



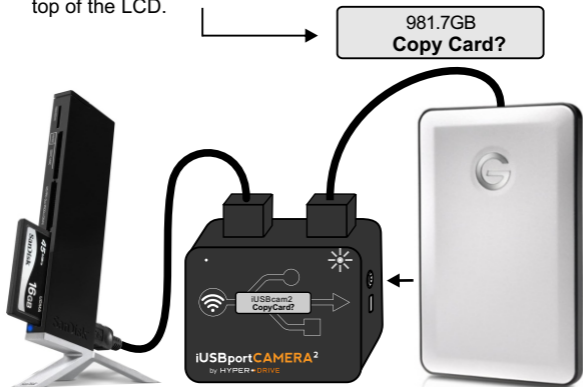
To enable HDMI output, connect HDMI adapter to iOS device.



Copying Memory Card to To USB HDD

iUSBport CAMERA can copy memory card from a USB card reader to a USB hard drive (FAT32 formatted). All files including photos and videos can be transferred into the USB HDD automatically.

- 1 Connect USB card reader with memory card to iUSBport CAMERA.
- 2 Connect USB HDD (FAT32 Formatted) to iUSBport CAMERA. If USB HDD is recognized, its capacity will be displayed at the top of the LCD.



- 3 When LCD displays "Copy Card?", press power button once. iUSBport CAMERA will copy memory card to USB HDD.
- 4 After successful copy, iUSBport will turn itself off. Otherwise, the error message will be displayed on the LCD for about one hour.

Standard Network Service List

There are several standard network servers built into the iUSBport CAMERA, such as FTP, DLNA, WebDAV and Samba servers. iUSBport CAMERA can be accessed by standard FTP, DLNA, WebDAV or Samba client software. FTP, WebDAV and Samba servers support read and write operation if the storage device is 'FAT32' or 'NTFS' formatted .

FTP Settings

FTP server IP address : **199.0.0.1** (Access Point mode)
(In infrastructure mode, use IP address that is shown on iUSBport LCD)
FTP server TCP/IP port number : 21
FTP server user name : anonymous
FTP server password : <none>

WebDAV Settings

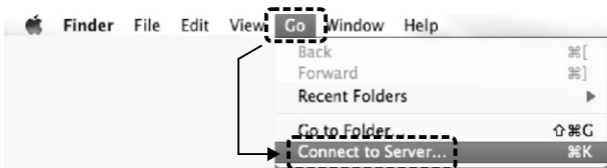
WebDAV server IP address : **http://199.0.0.1:81/webdav**
(Access Point mode)
(In infrastructure mode, use IP address that is shown on iUSBport LCD)
WebDAV server user name : <none>
WebDAV server password : <none>

Samba Settings

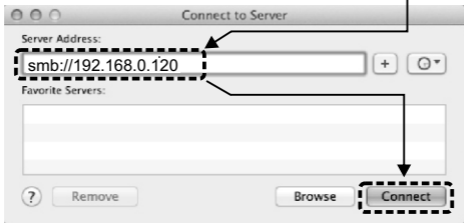
Samba server IP address : **199.0.0.1** (Access Point mode)
(In infrastructure mode, use IP address that is shown on iUSBport LCD)
Samba server TCP/IP port number : **139**
Samba server user name : Guest
Samba server password : <none>

Accessing iUSBport in Mac OS

- 1 In the Finder Window, select 'Connect to Server' from the 'Go' menu.



- 2 Enter the IP address of iUSBport (in the format smb://<IP address>) in the 'Server Address' text box.



- 3 Select 'Guest' and 'Connect' .



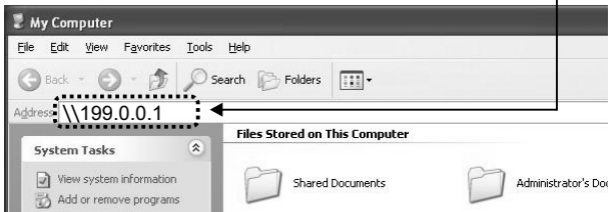
Accessing iUSBport in Windows

- 1 Open 'My Computer' ;

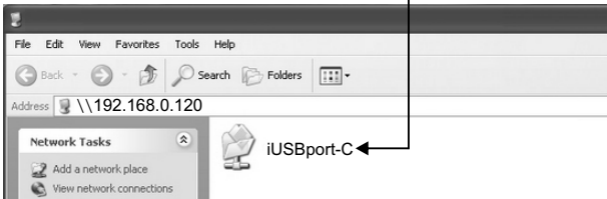


Enter the IP address of iUSBport in the address bar;

NOTE! Add two backslash before the IP address!



- 2 Click 'Go' or press Enter on the keyboard, and the iUSBport drive will show on the window.



- 3 Click 'iUSBport' to access the contents of iUSBport.

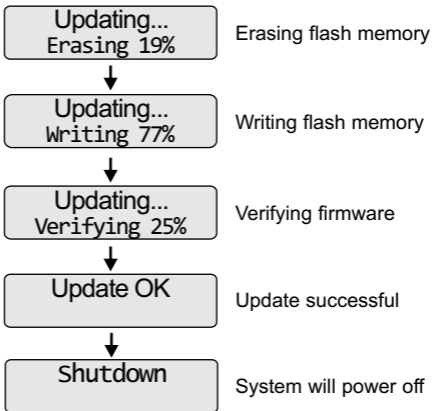
Upgrading the Firmware

The firmware of iUSBport CAMERA can be upgraded to add new features and to address any software bugs.

- 1 Download firmware which should be named **IUSBCAM2.SEF**
- 2 Copy **IUSBCAM2.SEF** to the root folder of USB storage device.
- 3 Insert this USB storage device into iUSBport and it will display the following update message: ↓

Update
V?? -> V31 ?

- 4 Press power button once to start updating.



Specifications

Model:	iUSBport CAMERA2
USB Port:	USB2.0 High Speed 480MBps x 2
Wireless:	WiFi 802.11b/g/n
LCD:	Mono STN 132*32 with backlight
Charging Rate:	DC 5V 1A
Battery:	3300mAh Li-Poly
Memory Card Slot :	Micro SDXC x 1
Standard Accessories :	Micro USB Charging Cable x 1 Mini USB Cable x1 User Manual x 1
Wireless Mode:	Access Point Mode Infrastructure Mode
Camera Control:	Canon/Nikon PTP Protocol
Network Service:	Web Server with extension FTP Server Samba Server DLNA Server WebDAV Server
Compatible With:	iPad/iPhone/Android/WiFi Devices USB Mass Storage Compliant Devices

iUSBport CAMERA²

Designed in Silicon Valley, California by Sanho Corporation
All rights reserved. Copyright 2014.

Apple, iPad, iPhone are registered trademarks of Apple, Inc.
All other trademarks and copyrights are the property of
their respective owners